

Emily & Edward NODEN



chedule is correctly filled up to the best of my kn
e Edward Noden

EMILY: Born: 1878

Died: 7 October 1913

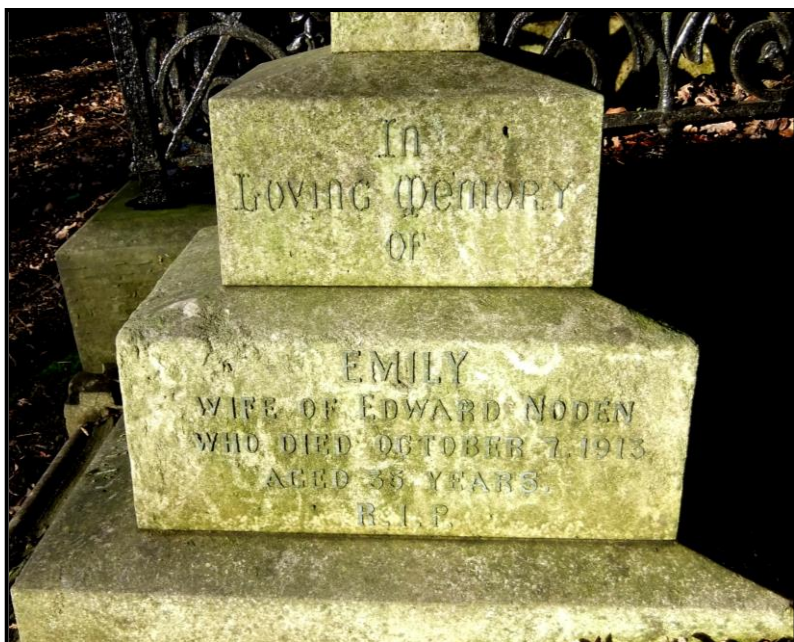
EDWARD: Bapt. 8 December 1850

Died: 14 November 1919

CHIEF CASHIER, BRIDGEWATER, ESTATES



Emily NODEN



*In
Loving Memory
of
EMILY
wife of **Edward Noden**
Who died October 7, 1913
Aged 35 years
R.I.P.*

*Also **EDWARD NODEN**
who died November 14th 1919
aged 69 yrs.
(d68)*

During the Parish working day in September 2016, a large framed photograph of a distinguished-looking gentleman was found within the organ chamber. After some research, it was found to be of **Edward Noden** - sitting in front of a half-timbered black and white building. The photo is currently in the Vestry.

Edward Noden was baptised at Bowdon on 8 December **1850**, the son of John and Hannah Noden. The census of 1851 shows that he was living with his family at 'Sinderland,' Dunham Massey, Cheshire. His father (39) was a Farmer of 28 acres, with 2 labourers. His mother Hannah was 38 and his siblings were John (15), Phoebe (8), William (6), and Mary (3). **Edward** was at this time just 5 months old.

By **1861**, John was still a farmer of the same piece of land, aged 49. Hannah was 48, their son John (25), Phoebe (18), William (16), Mary (13), **Edward** (10), Hannah (8) and there was another son George (3). **Edward** was now a scholar.

Ten years later, in **1871**, John was now farming 56 acres (aged 59) and many of the family were still at the family home in Sinderland Green - William (26), Mary (23), Edward (20), Hannah (18), George Pearson (13), with 2 domestics. Edward was now a Merchant's Clerk.

Edward married **Elizabeth Anne Hall** in the fourth quarter of **1877**, at St. Mary, Bowdon.

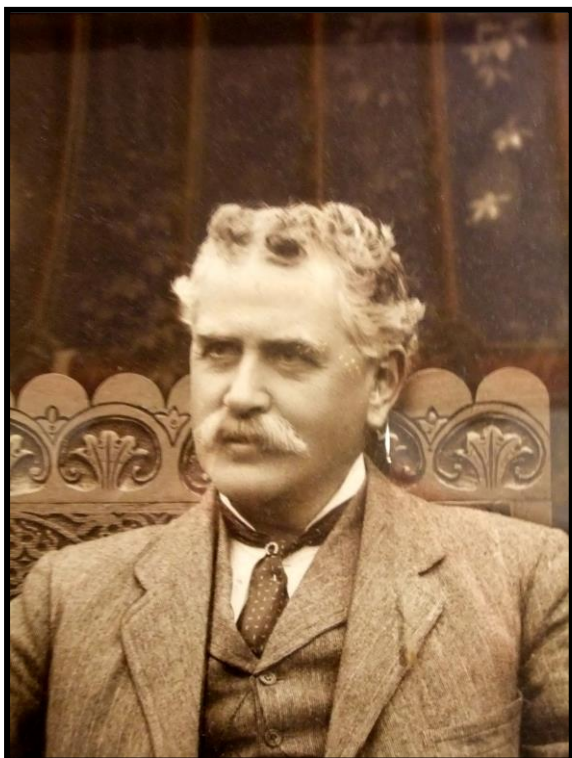
In the **1881** census, the couple were living at 12 Mill Brow, Worsley. Edward was 30, Elizabeth was 26, and he was recorded as being a Commercial clerk in the coal trade. Then, in **1899**, **Elizabeth Ann Noden** died on 10 March, aged 44. She lived at Beech House, Worsley. Her estate was left to her husband Edward. They had no children. She was buried at Bowdon on 13 March, aged 44.

In **1900**, Edward married **Emily Clegg** in the 2/4 qtr. of 1900 at Bucklow. The following year, in the **1901** census, they were living at Beech House, Worsley Road. **Edward** was a Cashier, aged 48, and **Emily** was 23. They had a daughter, Evelyn, aged 1 month. Sadly, the young **Evelyn** was buried at St. Mark's on 5 February **1902** by the Rev. F. K. Hodgkinson.

Move on to **1911** and **Edward** was still at Beech House, Worsley Road. His job was Chief Cashier in an Estate Office. He was aged 60 and his wife **Emily**, who was born in Ulverston, was 33. They had a

daughter Katharine, aged 7. Katharine was born on 19 October 1903 and baptised at St. Mark's on 25 November **1903** by the Rev. F. K. Hodgkinson.

Emily died on 7 October **1913**. Her estate was left to **Edward Noden** and Mary Evelyn Clegg, a spinster. She was buried at St. Mark's on 10 October 1913, aged 35 yrs. **Edward** himself died on 14 November **1919** at The Hotel Metropole, Blackpool, and was buried at St. Mark's on 18 November 1919, aged 69 yrs. In his will, he left his estate to George Pearson Noden, a brother, and two farmers, Samuel Davies and Edward Davies. Their daughter, Katherine (25), married George Norman Lowe (32), a Corn Merchant of Davyhulme, at St. Mark's on 11 September **1929**.



Edward Noden was the Honorary Treasurer of the Worsley Pageant of **1914**, held in the grounds of Worsley New Hall. He had also been a Parish Warden from **1893** to **1919**.

Emily Noden No. 2079	Beech House	October 10 th	35 ^{ys}	J. D. Stride near St Bartholomew
-------------------------	-------------	-----------------------------	------------------	--

Edward Noden No. 294	Beech House Worsley	18 Nov. 1919	69	H. W. Thorpe	68 D
-------------------------	------------------------	--------------------	----	--------------	---------

